

AUTOMOTIVE AFTERMARKET CALENDAR PROGRAM

**CELEBRATE THE YEAR 2019 BY GETTING YOUR MESSAGE INTO
THE HOME AND OFFICES OF YOUR CUSTOMERS...DAILY.**

- Let them know that you intend to shine bright in this new age & will be there to serve their needs.
- Calendars are used all year. Plus they are often saved as personal records and looked at year after year.
- Calendars are used where buying decisions are made: on the job, in the office, on the road, or at home. 65% of all calendar recipients write appointments and reminders on their calendar. This daily involvement keeps your advertising sign working all day, every day.

**ANY ONE COLOR
IMPRINT**

**GREAT
BONUS
DEALS
ON BACK**





1601 | Scenic Inspirations

Size Open: 11" x 19"

Size Closed: 11" x 10"

Nurture appreciation for our natural world with peaceful landscapes and motivational quotes.



1951 | Classic Muscle Cars

Size Open: 11" x 19"

Size Closed: 11" x 10"

Sleek lines, powerful engines, and nostalgic appeal.

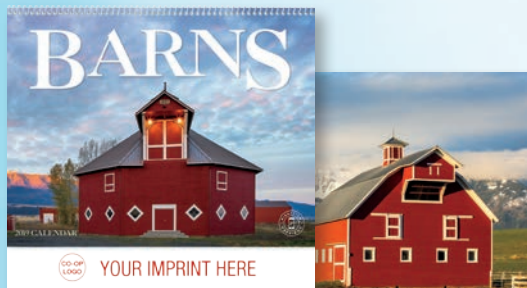


1452 | I Love America

Size Open: 11" x 19"

Size Closed: 11" x 10"

Celebrate patriotic spirit with quotes from presidents and other prominent Americans.



1700 | Barns

Size Open: 11" x 19"

Size Closed: 11" x 10"

Barns bring the peaceful country life home.

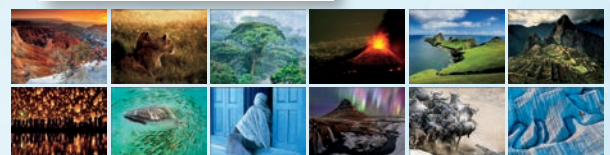


1732 | National Geographic Photography

Size Open: 11" x 19" Size

Closed: 11" x 10"

Experience the marvels of our world with iconic photography from renowned National Geographic.





YOUR IMPRINT HERE

1117 | Country Memories

by Dave Barnhouse

Size Open: 11" x 19"

Size Closed: 11" x 10"

Dave Barnhouse pays tribute to small town life with his nostalgic artwork each month.



YOUR IMPRINT HERE

1801 | North American Wildlife

Size Open: 11" x 19"

Size Closed: 11" x 10"

Daring photography of North America's wild animals. Wright's guide to the best fishing days each month is included.



YOUR IMPRINT HERE



1805 | Southeast Sportsman

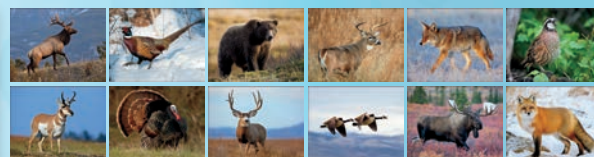
Size Open: 11" x 19"

Size Closed: 11" x 10"

Includes regional hunting-related information for Kentucky, Tennessee, North Carolina, South Carolina, Mississippi, Alabama, Georgia, Florida, and Arkansas.



YOUR IMPRINT HERE



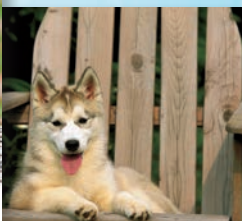
YOUR IMPRINT HERE

1054 | Puppies

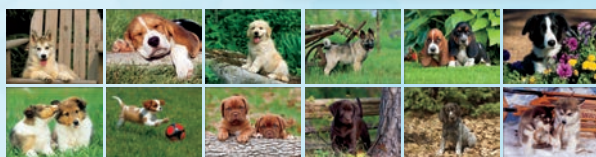
Size Open: 11" x 19"

Size Closed: 11" x 10"

Cute and cuddly puppies bring smiles all year.



YOUR IMPRINT HERE



YOUR IMPRINT HERE



YOUR IMPRINT HERE

1851 | Antique Tractors

Size Open: 11" x 19"

Size Closed: 11" x 10"

The history and restoration of beautiful, antique tractors is sure to impress tractor enthusiasts everywhere.



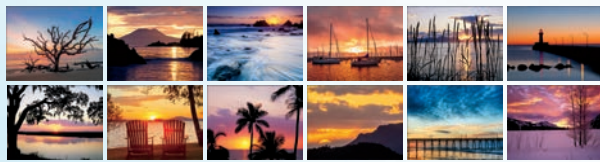
YOUR IMPRINT HERE





1715 | Sunrise / Sunset

Size Open: 11" x 19"
Size Closed: 11" x 10"
The warm glow of the sun fills the months of this peaceful calendar.



1709 | American Splendor

Size Open: 11" x 19"
Size Closed: 11" x 10"
Unforgettable pictures that capture the splendor of America's diverse landscapes.



1806 | Sportsman
Size Open: 11" x 19"
Size Closed: 11" x 10"
Popular game animals combined with Wright's guide to the best fishing days keeps outdoor enthusiasts interested all year long.



1863 | Classic Cars

Size Open: 11" x 19"
Size Closed: 11" x 10"
Features the stylish, elegant cars of the 1940s, 1950s, and 1960s.



1862 | Junkyard Classics

by Dale Klee
Size Open: 11" x 19"
Size Closed: 11" x 10"
Dale Klee paints cars just waiting to be restored.





1350 | Golf

Size Open: 11" x 19"

Size Closed: 11" x 10"

Keep golfers on the course year round with these golf scenes.

CO-OP LOGO YOUR IMPRINT HERE



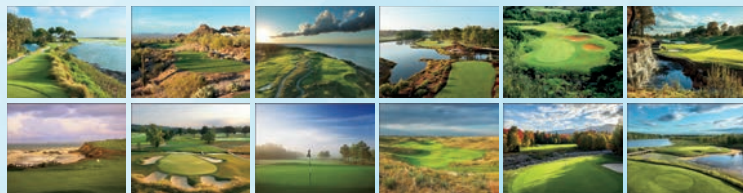
1600 | Motivations

Size Open: 11" x 19" Size

Closed: 11" x 10"

Motivate and inspire people to reach their full potential with captivating images and quotations.

CO-OP LOGO YOUR IMPRINT HERE



1850 | Muscle Cars

Size Open: 11" x 19" Size

Closed: 11" x 10"

Muscle cars in mint condition make a powerful impression. Plus, information about each featured car is included.



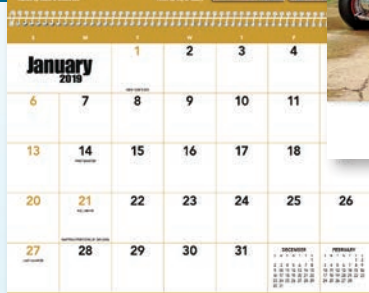
1859 | Exotic Cars

Size Open: 11" x 19" Size

Closed: 11" x 10"

Rev up excitement with the world's most desirable and exclusive cars. Information about each featured car is included.





CO-OP
LOGO YOUR IMPRINT HERE



CO-OP
LOGO YOUR IMPRINT HERE

1861 | Street Rods

Size Open: 11" x 19" Size

Closed: 11" x 10"

High-powered custom rods will amaze enthusiasts. Details about each featured rod are included.



CO-OP
LOGO YOUR IMPRINT HERE

1854 | American Muscle

Size Open: 11" x 19" Size

Closed: 11" x 10"

Classic muscle cars and beautiful women make an eye-catching calendar.



CO-OP
LOGO YOUR IMPRINT HERE



CO-OP
LOGO YOUR IMPRINT HERE



1855 | Big Rigs

Size Open: 11" x 19" Size

Closed: 11" x 10"

Custom big rigs give your advertising message a powerful boost.



CO-OP
LOGO YOUR IMPRINT HERE



JANUARY



CO-OP
LOGO YOUR IMPRINT HERE



CO-OP
LOGO YOUR IMPRINT HERE

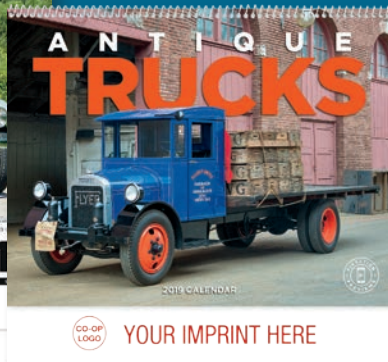
1858 | Antique Cars

Size Open: 11" x 19" Size

Closed: 11" x 10"

Stylish, classic automobiles lend nostalgia to advertising messages. Information about each featured car is included.

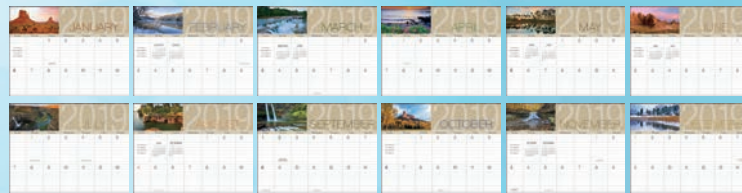




1857 | Antique Trucks
 Size Open: 11" x 19" Size
 Closed: 11" x 10"
 Classic and powerful antique trucks
 get the job done with style. Information
 about each featured truck is included.



1701 | Scenes of America Big Block Memo
 Size Open: 11" x 19"
 Size Closed: 11" x 10"
 Large ruled date grids provide ample
 writing space for busy people.



TRIUMPH® EXTRA SHEETS SAVE MONEY

AND REACH YOUR BUSINESS GOALS THIS YEAR
 BY ADDING ONE OF OUR FREE EXTRA SHEETS.

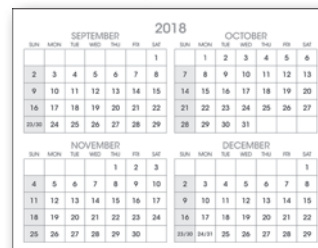
▼ Automotive Insight Backmount (full color)



▼ Season's greetings letter (full color)



▼ 4-month grid (black and white)



▼ Extra sheet (full color)



These extra sheets are available on the following styles:
 1054, 1117, 1350, 1600, 1601, 1700, 1701, 1709, 1715, 1801
 1850, 1851, 1854, 1855, 1857, 1858, 1859, 1861, 1862, 1863, 1951

If choosing an extra sheet, the same sheet will
 be on all calendars for that purchase order
 and will be placed after the front cover.

- Boost store traffic with 6 or 12 coupons
- Eliminate a mailing by including a holiday or sales letter
- Get your calendar up on the wall first with a 16-month calendar

GOOD VALUE™ LINE

Calendars at a Super Low Price. You won't find a Better Value than "The Good Value™ Line". Minimum 300 per style. All of the Good Value Line appointments are 13-month calendars running from December 2018 - December 2019



7056 | Motorcycles

Style: Spiral

Size Open: 11" x 19" Size

Closed: 11" x 10"

Chrome, custom paint, and plenty of attitude on this 13-month calendar.



GOOD VALUE™ LINE



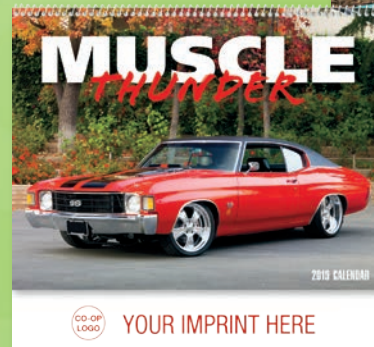
7005 | Muscle Thunder

Style: Spiral

Size Open: 11" x 19" Size

Closed: 11" x 10"

Powerful muscle cars deliver ad messages fast on this 13-month calendar.



7012 | American Armed Forces

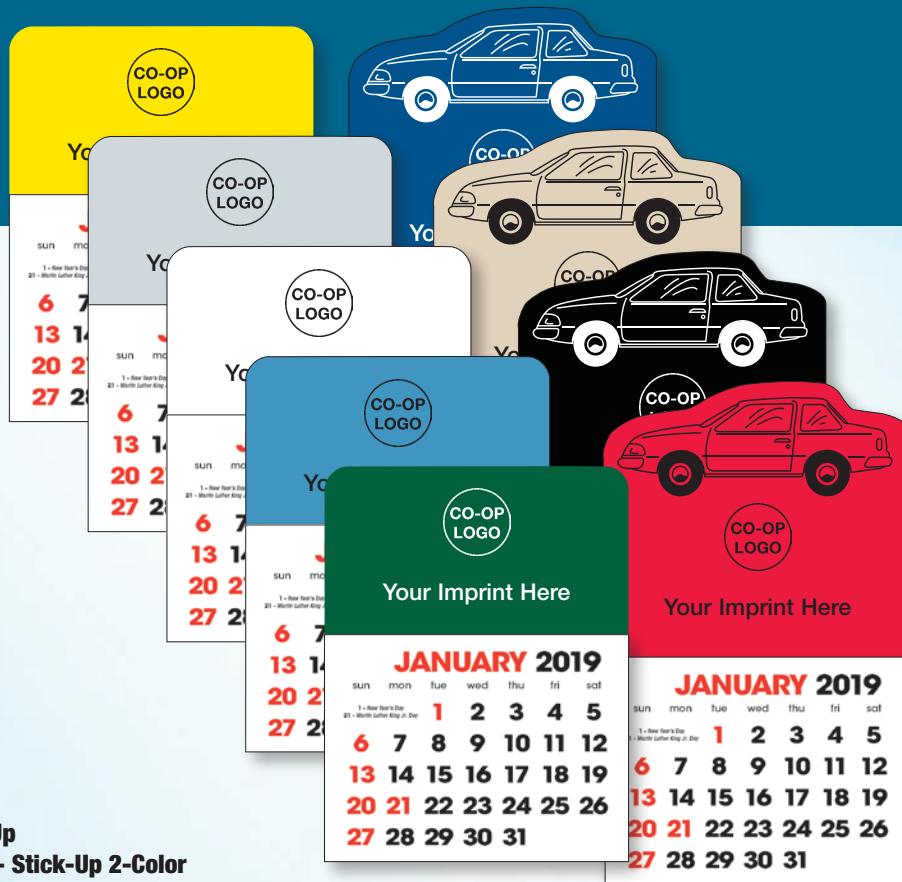
Style: Spiral

Size Open: 11" x 19" Size

Closed: 11" x 10"

Show your support of our troops all year long with our 13 month calendar.





Car Stick Up

Rectangle Stick Up

5323 | Pad No. 1 - Stick-Up 2-Color

5324 | Pad No. 2 - Memorable Muscle

Size: 3" x 2-1/4"

Stick ups give your message big exposure for little cost. They're versatile too: you can place them in vehicles and on refrigerators, file cabinets and more!



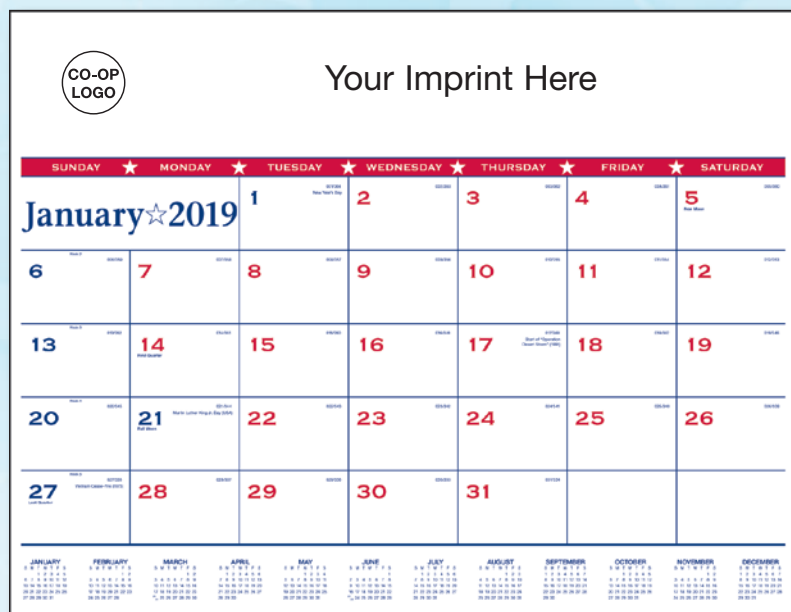
**5323 | Pad No. 1
Stick-Up 2-Color**



**5324 | Pad No. 2
Memorable Muscle**



8001 | Monthly Pocket Planner
Size Open: 7" x 6" Size Closed: 3-1/2" x 6"
A durable, portable planner perfect for scheduling on the go. 13-month grid runs December 2018 to December 2019.



6502 | Desk Pad
Size: 22" x 17"
Show your patriotic pride with this red, white, and blue desk pad. Printed using 281 blue and 193 red.

6108 | Patriotic Contractor Memo
13-sheet
Size: 18" x 25"
Large numbers for easy reading plus lots of space for writing. Includes Julian dates and a guide to work days remaining in the year.





21155 | Mini Auto Trash Can

Product Dimensions: 3-7/8" w x 6-3/4" h
Designed for the trash needs of any car! Fits easily in any cup holder.

21102 | Roadside Safety Light

Product Dimensions: 5-1/2" l x 1" dia.
Safety flashlight to keep in the car for emergencies! Magnetic bottom provides adhesion to car and other metal surfaces.



21101 | Twist Keylight

Product Dimensions: 2-1/8" l x 3/4" dia.
Key chain with split ring with a rubberized plastic finish.



21110 | Mini Double Ring Tire Gauge

Product Dimensions: 3-1/4" l x 5/8" dia.
This stylish mini tire pressure gauge is sure to make an impact! Featuring a key ring, it also holds your keys.



EMB | BIC® Emblem Pen

Product Dimensions: 5-5/8" l x 15/32" dia.
FREE Set-up with the iconic BIC Boy molded into metal rivets on the upper barrel. Contoured barrel with comfortable rubber grip.



32045 | Suction Cup Phone Holder & Stand

Product Dimensions: 3-7/8" w x 1-1/8" h x 3/8" d
Suction cups adhere securely to most hard, flat surfaces. Helps keep bigger devices from slipping out of your hands.



CS | BIC® Clic Stic®

Product Dimensions: 5-7/16" l x 1/2" dia.
FREE Set-up and always in stock of the most popular retractable pen in promotional products!

BONUS OFFERS!