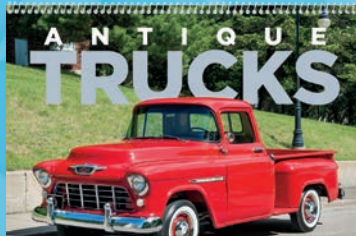


# AUTOMOTIVE AFTERMARKET CALENDAR PROGRAM

**CELEBRATE THE YEAR 2020 BY GETTING YOUR MESSAGE INTO  
THE HOME AND OFFICES OF YOUR CUSTOMERS...DAILY.**

- Let them know that you intend to shine bright in this new age & will be there to serve their needs.
- Calendars are used all year. Plus they are often saved as personal records and looked at year after year.
- Calendars are used where buying decisions are made: on the job, in the office, on the road, or at home. 65% of all calendar recipients write appointments and reminders on their calendar. This daily involvement keeps your advertising sign working all day, every day.

**ANY ONE COLOR  
IMPRINT**



**GREAT  
BONUS  
DEALS  
ON BACK**







### 1601 | Scenic Inspirations

Size Open: 11" x 19"

Size Closed: 11" x 10"

Nurture appreciation for our natural world with peaceful landscapes and motivational quotes.



### 1951 | Classic Muscle Cars

Size Open: 11" x 19"

Size Closed: 11" x 10"

Sleek lines, powerful engines, and nostalgic appeal.



### 1452 | I Love America

Size Open: 11" x 19"

Size Closed: 11" x 10"

Celebrate patriotic spirit with quotes from presidents and other prominent Americans.



### 1700 | Barns

Size Open: 11" x 19"

Size Closed: 11" x 10"

Barns bring the peaceful country life home.

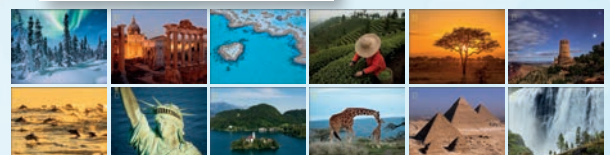


### 1732 | National Geographic Photography

Size Open: 11" x 19"

Size Closed: 11" x 10"

Experience the marvels of our world with iconic photography from renowned National Geographic.





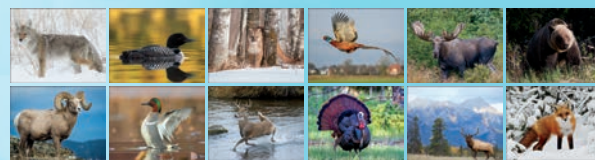


**1117 | Country Memories**  
by Dave Barnhouse  
Size Open: 11" x 19"  
Size Closed: 11" x 10"  
Dave Barnhouse pays tribute to small town life with his nostalgic artwork each month.



### 1805 | Southeast Sportsman

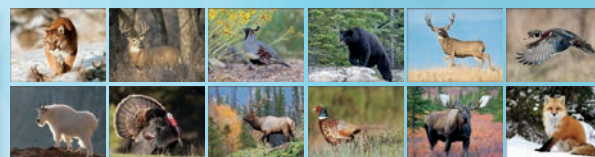
Size Open: 11" x 19"  
Size Closed: 11" x 10"  
Includes regional hunting-related information for Kentucky, Tennessee, North Carolina, South Carolina, Mississippi, Alabama, Georgia, Florida, and Arkansas.



**1054 | Puppies**  
Size Open: 11" x 19"  
Size Closed: 11" x 10"  
Cute and cuddly puppies bring smiles all year.



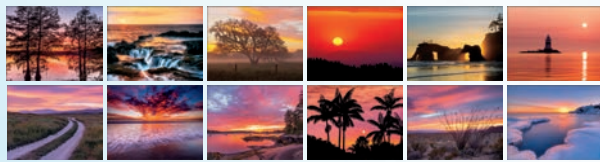
**1801 | North American Wildlife**  
Size Open: 11" x 19"  
Size Closed: 11" x 10"  
Daring photography of North America's wild animals. Wright's guide to the best fishing days each month is included.



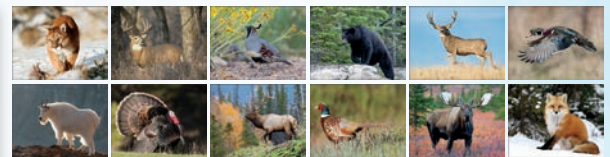
**1851 | Antique Tractors**  
Size Open: 11" x 19"  
Size Closed: 11" x 10"  
The history and restoration of beautiful, antique tractors is sure to impress tractor enthusiasts everywhere.







**1806 | Sportsman**  
Size Open: 11" x 19"  
Size Closed: 11" x 10"  
Popular game animals combined with Wright's guide to the best fishing days keeps outdoor enthusiasts interested all year long.



**1863 | Classic Cars**  
Size Open: 11" x 19"  
Size Closed: 11" x 10"  
Features the stylish, elegant cars of the 1940s, 1950s, and 1960s.



**1862 | Junkyard Classics**  
by Dale Klee  
Size Open: 11" x 19"  
Size Closed: 11" x 10"  
Dale Klee paints cars just waiting to be restored.





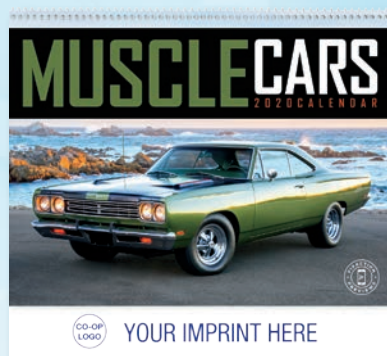


### 1600 | Motivations

Size Open: 11" x 19" Size

Closed: 11" x 10"

Motivate and inspire people to reach their full potential with captivating images and quotations.



### 1850 | Muscle Cars

Size Open: 11" x 19" Size

Closed: 11" x 10"

Muscle cars in mint condition make a powerful impression. Plus, information about each featured car is included.



### 1859 | Exotic Cars


Size Open: 11" x 19" Size

Closed: 11" x 10"

Rev up excitement with the world's most desirable and exclusive cars. Information about each featured car is included.








## STREET RODS

2020 CALENDAR



**1931 FORD FIVE-WINDOW COUPE**

CO-OP LOGO YOUR IMPRINT HERE

**1861 | Street Rods**  
 Size Open: 11" x 19" Size  
 Closed: 11" x 10"  
 High-powered custom rods will amaze enthusiasts. Details about each featured rod are included.

CO-OP LOGO YOUR IMPRINT HERE



## AMERICAN MUSCLE

2020 CALENDAR

CO-OP LOGO YOUR IMPRINT HERE



## AMERICAN MUSCLE

2020 CALENDAR

CO-OP LOGO YOUR IMPRINT HERE

**1854 | American Muscle**  
 Size Open: 11" x 19"  
 Size Closed: 11" x 10"  
 Classic muscle cars and beautiful women make an eye-catching calendar.




## BIG RIGS

2020 CALENDAR



CO-OP LOGO YOUR IMPRINT HERE

**1855 | Big Rigs**  
 Size Open: 11" x 19" Size  
 Closed: 11" x 10"  
 Custom big rigs give your advertising message a powerful boost.

**JANUARY 2020**

CO-OP LOGO YOUR IMPRINT HERE



## ANTIQUE CARS

2020 CALENDAR

CO-OP LOGO YOUR IMPRINT HERE

**1858 | Antique Cars**  
 Size Open: 11" x 19" Size  
 Closed: 11" x 10"  
 Stylish, classic automobiles lend nostalgia to advertising messages. Information about each featured car is included.

**JANUARY**

CO-OP LOGO YOUR IMPRINT HERE



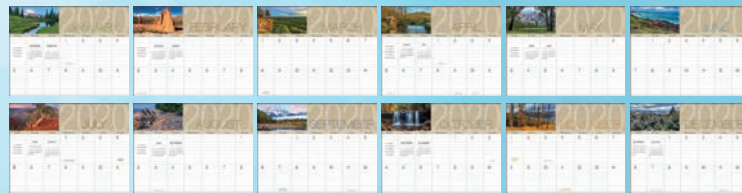




**1857 | Antique Trucks**  
 Size Open: 11" x 19" Size  
 Closed: 11" x 10"  
 Classic and powerful antique trucks  
 get the job done with style. Information  
 about each featured truck is included.



**1701 | Scenes of America Big Block Memo**  
 Size Open: 11" x 19"  
 Size Closed: 11" x 10"  
 Large ruled date grids provide ample  
 writing space for busy people.



# TRIUMPH® EXTRA SHEETS SAVE MONEY

AND REACH YOUR BUSINESS GOALS THIS YEAR  
 BY ADDING ONE OF OUR FREE EXTRA SHEETS.

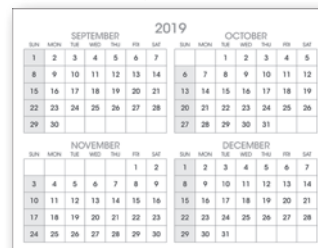
▼ Automotive Insight Backmount (full color)



▼ Season's greetings letter (full color)



▼ 4-month grid (black and white)



▼ Extra sheet (full color)



These extra sheets are available on the following styles:  
 1054, 1117, 1600, 1601, 1700, 1701, 1709, 1715, 1801, 1850,  
 1851, 1854, 1855, 1857, 1858, 1859, 1861, 1862, 1863, 1951

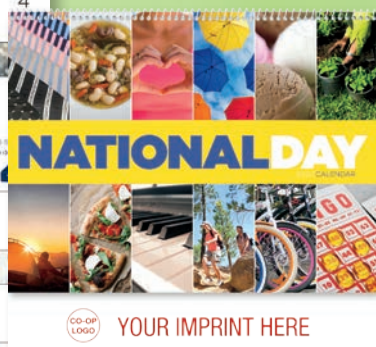
If choosing an extra sheet, the same sheet will  
 be on all calendars for that purchase order  
 and will be placed after the front cover.

- Boost store traffic with 6 or 12 coupons
- Eliminate a mailing by including a holiday or sales letter
- Get your calendar up on the wall first with a 16-month calendar



# GOOD VALUE™ LINE

Calendars at a Super Low Price. You won't find a Better Value than "The Good Value™ Line". Minimum 300 per style. All of the Good Value Line appointments are 13-month calendars running from December 2019 - December 2020



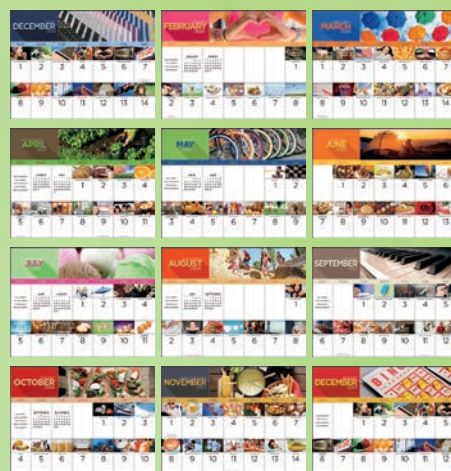
## 7032 | National Day

Style: Spiral

Size Open: 11" x 19" Size

Closed: 11" x 10"

This lighthearted calendar keeps customers coming back for more.



## 7046 | Scenic Memories

Style: Spiral

Size Open: 11" x 19" Size

Closed: 11" x 10"

The nostalgic feel of this 13-month calendar reminds customers of bygone years





# GOOD VALUE™ LINE



## 7005 | Muscle Thunder

Style: Spiral

Size Open: 11" x 19" Size

Closed: 11" x 10"

Powerful muscle cars deliver ad messages fast on this 13-month calendar.



YOUR IMPRINT HERE



JANUARY

2020



YOUR IMPRINT HERE

## 7012 | American Armed Forces

Style: Spiral

Size Open: 11" x 19" Size

Closed: 11" x 10"

Show your support of our troops all year long with our 13 month calendar.



YOUR IMPRINT HERE



JANUARY

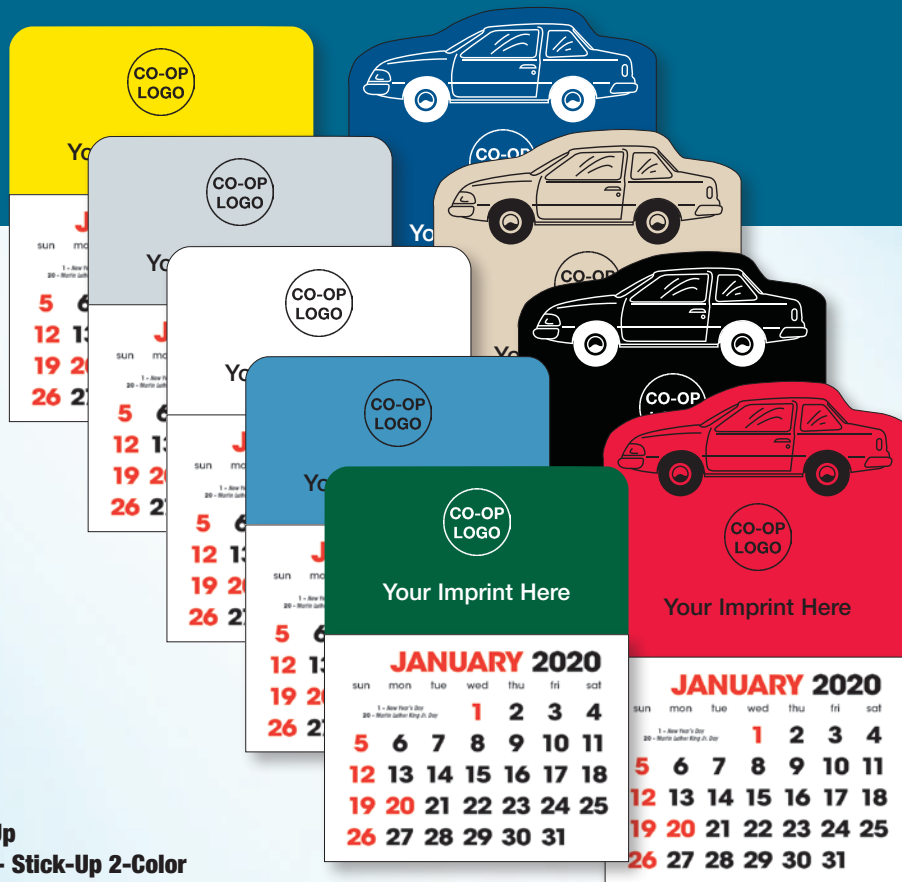
2020



YOUR IMPRINT HERE







## Car Stick Up

### Rectangle Stick Up

**5323 | Pad No. 1 - Stick-Up 2-Color**

**5324 | Pad No. 2 - Memorable Muscle**

Size: 3" x 2-1/4"

Stick ups give your message big exposure for little cost. They're versatile too: you can place them in vehicles and on refrigerators, file cabinets and more!



**5323 | Pad No. 1  
Stick-Up 2-Color**

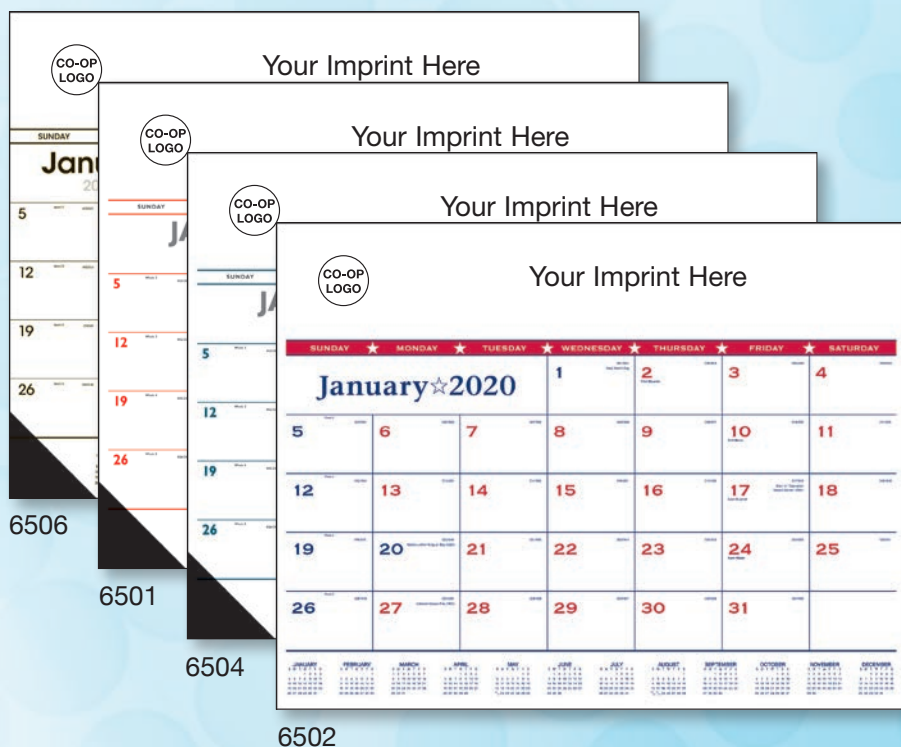


**5324 | Pad No. 2  
Memorable Muscle**





**8001 | Monthly Pocket Planner**  
 Size Open: 7" x 6" Size Closed: 3-1/2" x 6"  
 A durable, portable planner perfect for scheduling on the go. 13-month grid runs December 2019 to December 2020.



**6502 | Patriotic Desk Pad**  
 Size: 22" x 17"  
 Show your patriotic pride with this red, white, and blue desk pad. Printed using 281 blue and 193 red.

**6501 | Red & Black Desk Pad with vinyl corners**

**6504 | Blue & Black Desk Pad with vinyl corners**

**6506 | Black & White Desk Pad with vinyl corners**

**6108 | Patriotic Contractor Memo 13-sheet**  
 Size: 18" x 25"  
 Large numbers for easy reading plus lots of space for writing. Includes Julian dates and a guide to work days remaining in the year.







### 21155 | Mini Auto Trash Can

Product Dimensions: 3-7/8" w x 6-3/4" h  
Designed for the trash needs of any car! Fits easily in any cup holder.



### 21110 | Mini Double Ring Tire Gauge

Product Dimensions: 3-1/4" l x 5/8" dia.  
This stylish mini tire pressure gauge is sure to make an impact! Featuring a key ring, it also holds your keys.

### 21102 | Roadside Safety Light

Product Dimensions: 5-1/2" l x 1" dia.  
Safety flashlight to keep in the car for emergencies! Magnetic bottom provides adhesion to car and other metal surfaces.



### 21237 | 7-in-1 Tool Pen

Product Dimensions: 5-3/4" l x 1/2" dia.  
You will be doing more than just writing with 7 different handy features this pen has to offer. Don't forget you can clip it too.



### 21101 | Twist Keylight

Product Dimensions: 2-1/8" l x 3/4" dia.  
Key chain with split ring with a rubberized plastic finish.



### EMB | BIC® Emblem Pen

Product Dimensions: 5-5/8" l x 15/32" dia.  
FREE Set-up with the iconic BIC Boy molded into metal rivets on the upper barrel. Contoured barrel with comfortable rubber grip.



### 32045 | Suction Cup Phone Holder & Stand

Product Dimensions: 3-7/8" w x 1-1/8" h x 3/8" d  
Suction cups adhere securely to most hard, flat surfaces. Helps keep bigger devices from slipping out of your hands.



### CS | BIC® Clic Stic®

Product Dimensions: 5-7/16" l x 1/2" dia.  
FREE Set-up and always in stock of the most popular retractable pen in promotional products!

# BONUS OFFERS!