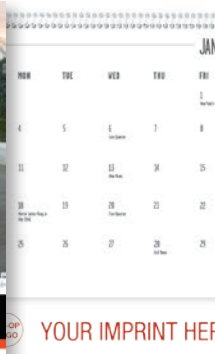
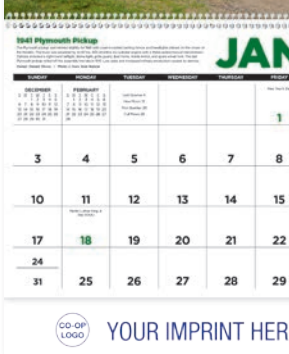


2021

AUTOMOTIVE AFTERMARKET CALENDAR PROGRAM



ANY ONE COLOR IMPRINT

- Let them know that you intend to shine bright in this new age & will be there to serve their needs.
- Calendars are used all year. Plus they are often saved as personal records and looked at year after year.
- Calendars are used where buying decisions are made: on the job, in the office, on the road, or at home. 65% of all calendar recipients write appointments and reminders on their calendar.
- This daily involvement keeps your advertising sign working all day, every day.



**CELEBRATE THE YEAR 2021 BY GETTING YOUR MESSAGE INTO
THE HOME AND OFFICES OF YOUR CUSTOMERS...DAILY.**



1601 | Scenic Inspirations

Size Open: 11" x 19"
Size Closed: 11" x 10"
Nurture appreciation for our natural world with peaceful landscapes and motivational quotes.



1951 | Classic Muscle Cars

Size Open: 11" x 19"
Size Closed: 11" x 10"
Sleek lines, powerful engines, and nostalgic appeal.



1452 | I Love America

Size Open: 11" x 19"
Size Closed: 11" x 10"
Celebrate patriotic spirit with quotes from presidents and other prominent Americans.



1700 | Barns

Size Open: 11" x 19"
Size Closed: 11" x 10"
Barns bring the peaceful country life home.





1732 | National Geographic Photography

Size Open: 11" x 19"

Size Closed: 11" x 10"

Experience the marvels of our world with iconic photography from renowned National Geographic.

© 2019 National Geographic Partners LLC. All rights reserved. NATIONAL GEOGRAPHIC and Yellow Border Design are trademarks of the National Geographic Society, used under license.



1117 | Country Memories

by Dave Barnhouse

Size Open: 11" x 19"

Size Closed: 11" x 10"

Dave Barnhouse pays tribute to small town life with his nostalgic artwork each month.



1801 | North American Wildlife

Size Open: 11" x 19"

Size Closed: 11" x 10"

Daring photography of North America's wild animals. Wright's guide to the best fishing days each month is included.

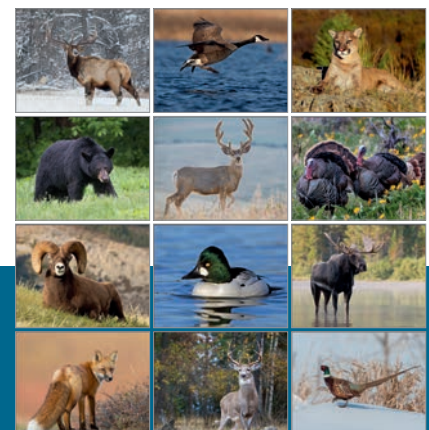


1805 | Southeast Sportsman

Size Open: 11" x 19"

Size Closed: 11" x 10"

Includes regional hunting-related information for Kentucky, Tennessee, North Carolina, South Carolina, Mississippi, Alabama, Georgia, Florida, and Arkansas.





1851 | Antique Tractors

Size Open: 11" x 19"

Size Closed: 11" x 10"

The history and restoration of beautiful, antique tractors is sure to impress tractor enthusiasts everywhere.



1054 | Puppies

Size Open: 11" x 19"

Size Closed: 11" x 10"

Cute and cuddly puppies bring smiles all year.

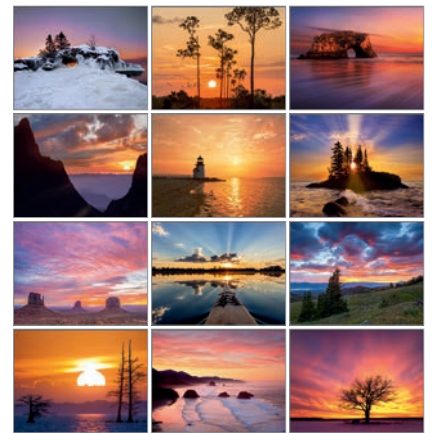


1715 | Sunrise / Sunset

Size Open: 11" x 19"

Size Closed: 11" x 10"

The warm glow of the sun fills the months of this peaceful calendar.

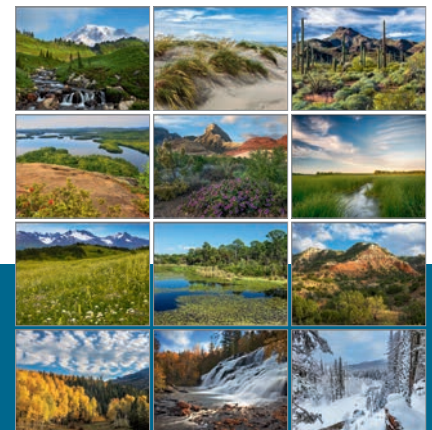


1709 | American Splendor

Size Open: 11" x 19"

Size Closed: 11" x 10"

Unforgettable pictures that capture the splendor of America's diverse landscapes.



Guaranteed Inventory
Always Available

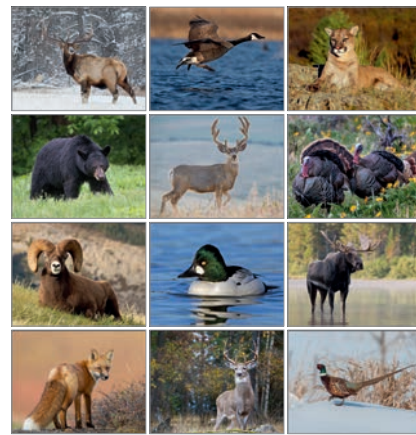


1806 | Sportsman

Size Open: 11" x 19"

Size Closed: 11" x 10"

Popular game animals combined with Wright's guide to the best fishing days keeps outdoor enthusiasts interested all year long.



1863 | Classic Cars

Size Open: 11" x 19"

Size Closed: 11" x 10"

Features the stylish, elegant cars of the 1940s, 1950s, and 1960s.



1862 | Junkyard Classics

by Dale Klee

Size Open: 11" x 19"

Size Closed: 11" x 10"

Dale Klee paints cars just waiting to be restored.

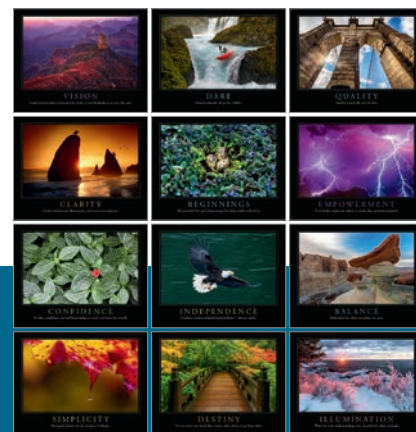


1600 | Motivations

Size Open: 11" x 19"

Size Closed: 11" x 10"

Motivate and inspire people to reach their full potential with captivating images and quotations.





1850 | Muscle Cars

Size Open: 11" x 19"

Size Closed: 11" x 10"

Muscle cars in mint condition make a powerful impression. Plus, information about each featured car is included.

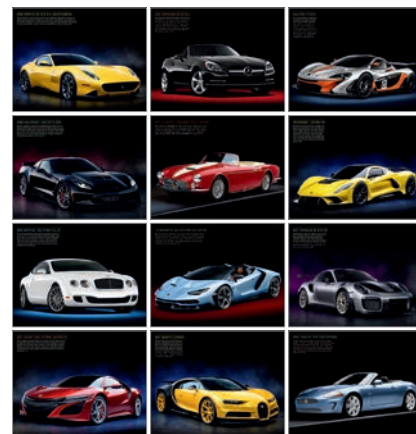


1859 | Exotic Cars

Size Open: 11" x 19"

Size Closed: 11" x 10"

Rev up excitement with the world's most desirable and exclusive cars. Information about each featured car is included.



1861 | Street Rods

Size Open: 11" x 19"

Size Closed: 11" x 10"

High-powered custom rods will amaze enthusiasts. Details about each featured rod are included.



1854 | American Muscle

Size Open: 11" x 19"

Size Closed: 11" x 10"

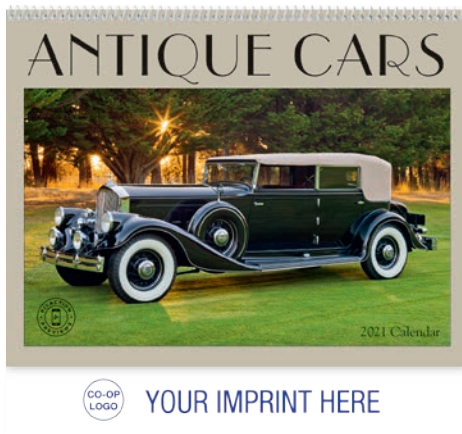
Classic muscle cars and beautiful women make an eye-catching calendar.



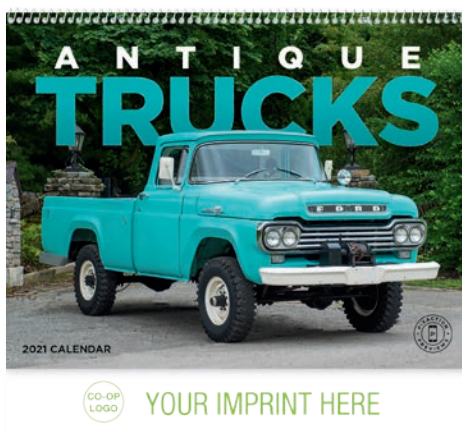
Guaranteed Inventory
Always Available



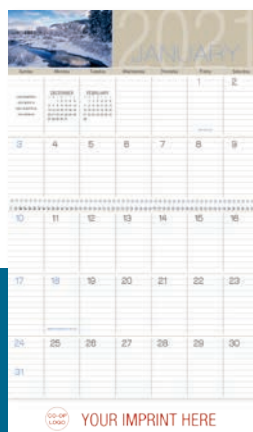
1855 | Big Rigs
 Size Open: 11" x 19"
 Size Closed: 11" x 10"
 Custom big rigs give your advertising message a powerful boost.



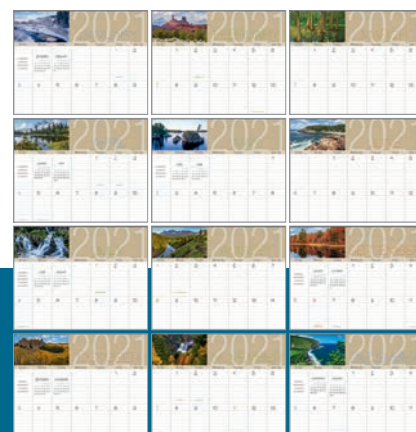
1858 | Antique Cars
 Size Open: 11" x 19"
 Size Closed: 11" x 10"
 Stylish, classic automobiles lend nostalgia to advertising messages. Information about each featured car is included.



1857 | Antique Trucks
 Size Open: 11" x 19"
 Size Closed: 11" x 10"
 Classic and powerful antique trucks get the job done with style. Information about each featured truck is included.



1701 | Scenes of America Big Block Memo
 Size Open: 11" x 19"
 Size Closed: 11" x 10"
 Large ruled date grids provide ample writing space for busy people.



TRIUMPH® EXTRA SHEETS
SAVE MONEY

AND REACH YOUR BUSINESS GOALS THIS YEAR BY ADDING ONE OF OUR FREE EXTRA SHEETS.

These extra sheets are available on the following styles: 1054, 1117, 1600, 1601, 1700, 1701, 1709, 1715, 1801, 1850, 1851, 1854, 1855, 1857, 1858, 1859, 1861, 1862, 1863, 1951



Coupon sheet (full color)



Coupon sheet (full color)



Automotive Insights (full color)

GOOD VALUE™ LINE

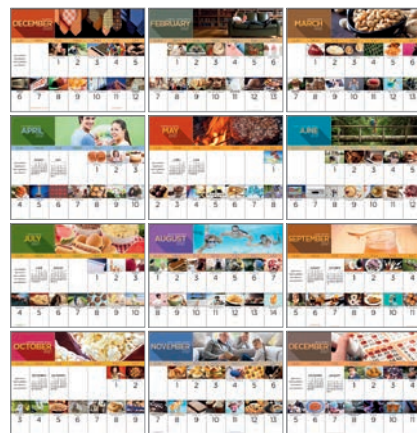
**7032 | National Day**

Style: Spiral

Size Open: 11" x 19"

Size Closed: 11" x 10"

This lighthearted calendar keeps customers coming back for more.

**7046 | Scenic**

Memories

Style: Spiral

Size Open: 11" x 19"

Size Closed: 11" x 10"

The nostalgic feel of this 13-month calendar reminds customers of bygone years



- Boost store traffic with 6 or 12 coupons
- Eliminate a mailing by including a holiday or sales letter
- Get your calendar up on the wall first with a 16-month calendar

If choosing an extra sheet, the same sheet will be on all calendars for that purchase order and will be placed after the front cover.



Season's Greetings letter (full color)

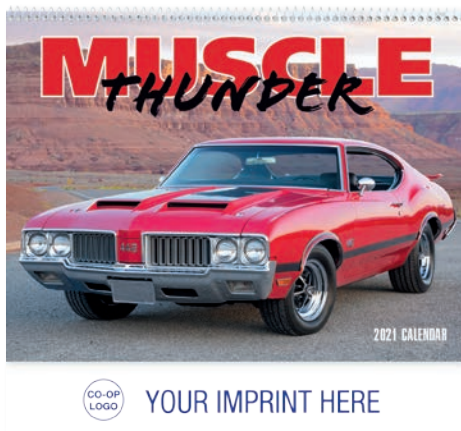


4-month grid (black and white)



Extra sheet (full color)

Calendars at a Super Low Price. You won't find a Better Value than "The Good Value™ Line". Minimum 300 per style. All of the Good Value Line appointments are 13-month calendars running from December 2020 - December 2021



7005 | Muscle Thunder

Style: Spiral

Size Open: 11" x 19"

Size Closed: 11" x 10"

Powerful muscle cars deliver ad messages fast on this 13-month calendar.



7012 | American Armed Forces

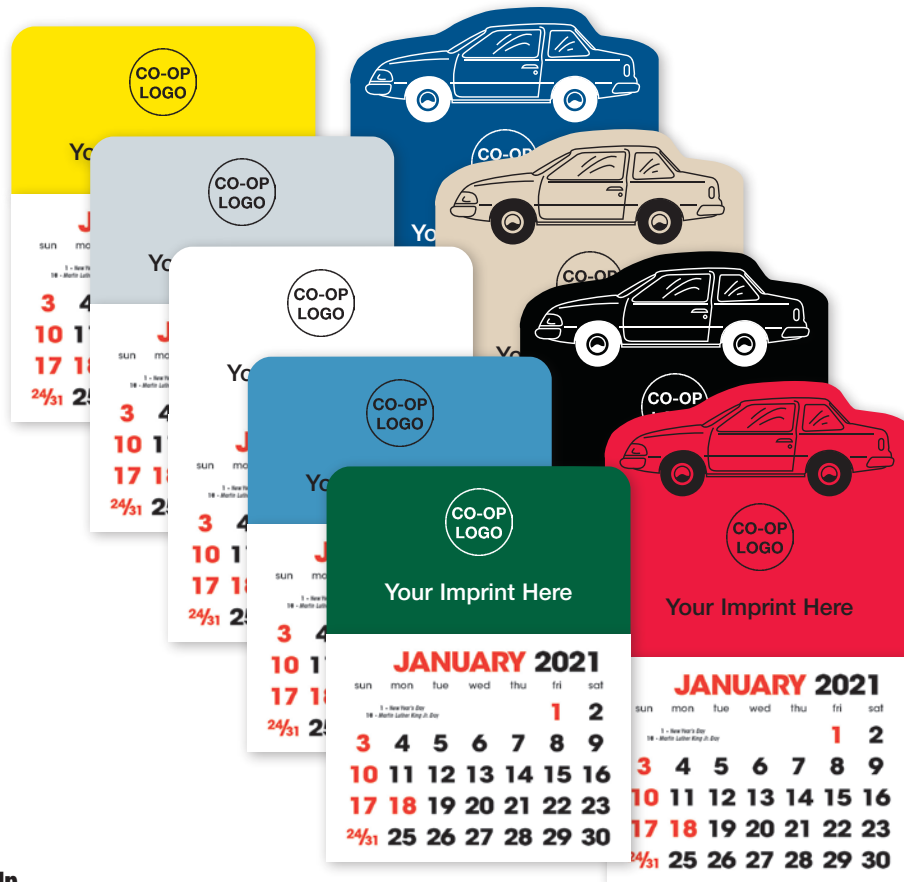
Style: Spiral

Size Open: 11" x 19"

Size Closed: 11" x 10"

Show your support of our troops all year long with our 13 month calendar.





5323 | Pad No. 1
Stick-Up 2-Color

Car Stick Up

Rectangle Stick Up

5323 | Pad No. 1 - Stick-Up 2-Color

5324 | Pad No. 2 - Memorable Muscle

Size: 3" x 2-1/4"

Stick ups give your message big exposure for little cost. They're versatile too: you can place them in vehicles and on refrigerators, file cabinets and more!



5324 | Pad No. 2
Memorable Muscle



Black

Navy

Burgundy

Standard Leatherette Colors



Red

Blue

Onyx

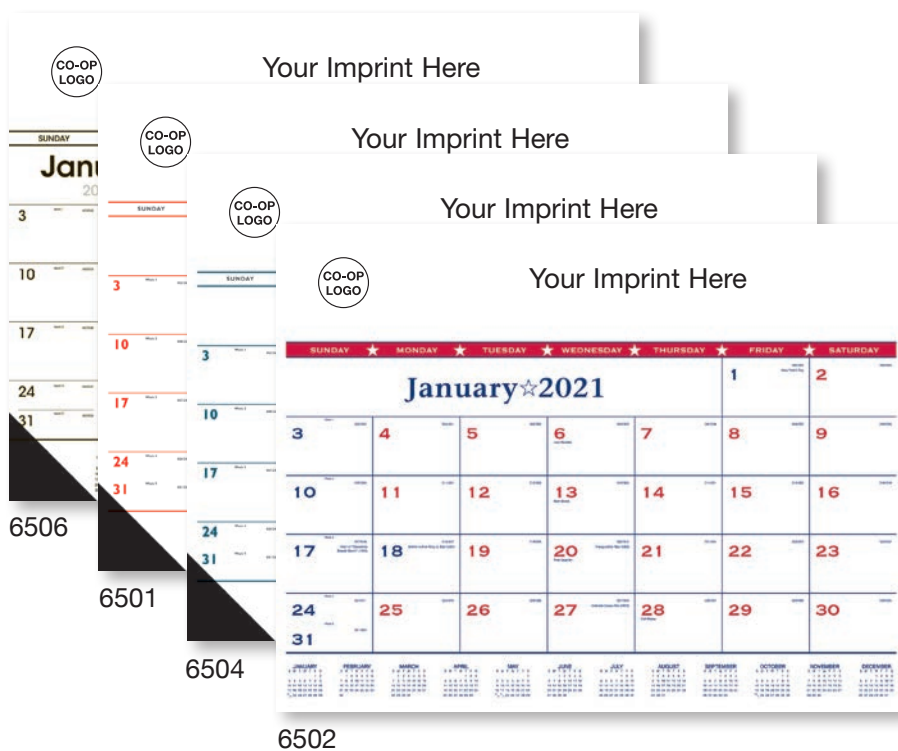
Matte Leatherette Colors



8001 | Monthly Pocket Planner

Size Open: 7" x 6" Size Closed: 3-1/2" x 6"

A durable, portable planner perfect for scheduling on the go. 13-month grid runs December 2019 to December 2020.



6502 | Patriotic Desk Pad

Size: 22" x 17"

Show your patriotic pride with this red, white, and blue desk pad. Printed using 281 blue and 193 red.

6501 | Red & Black Desk Pad with vinyl corners

6504 | Blue & Black Desk Pad with vinyl corners

6506 | Black & White Desk Pad with vinyl corners

6108 | Patriotic Contractor Memo 13-sheet

Size: 18" x 25"

Large numbers for easy reading plus lots of space for writing. Includes Julian dates and a guide to work days remaining in the year.



Always Available

2021 *BONUS OFFERS!*



21155 | Mini Auto Trash Can

Product Dimensions: 3-7/8" w x 6-3/4" h
Designed for the trash needs of any car! Fits easily in any cup holder.



21214 | 3-in-1 COB Emergency Tool

Product Dimensions: 1" h x 4.875" w
Keep this item in your glove box because it is a great tool for emergency purposes. Full Color Set-Up, \$50.00(G) per order



TB6A4A25 | BIC® Memo Tab™ Adhesive Notepad, 25 Sheet Pad

Product Dimensions: 6" h x 4" w.
FREE Set-up on this adhesive notepad with free vibrant 4-color process imprint.



21110 | Mini Double Ring Tire Gauge

Product Dimensions: 3-1/4" l x 5/8" dia.
This stylish mini tire pressure gauge is sure to make an impact! Featuring a key ring, it also holds your keys.



21276 | No Contact Utility Tool Key

Product Dimensions: 1.25" h x 3.25" w
Perfect for any time when you are afraid of touching external objects surfaces! Laser Engrave Set-Up \$50.00.



21237 | 7-in-1 Tool Pen

Product Dimensions: 5-3/4" l x 1/2" dia.
You will be doing more than just writing with 7 different handy features this pen has to offer. Don't forget you can clip it too.



EMBW | BIC® Emblem Pen

Product Dimensions: 5-5/8" l x 15/32" dia.
FREE Set-up with the iconic BIC Boy molded into metal rivets on the upper barrel. Contoured barrel with comfortable rubber grip.



CS | BIC® Clic Stic®

Product Dimensions: 5-7/16" l x 1/2" dia.
FREE Set-up and always in stock of the most popular retractable pen in promotional products!